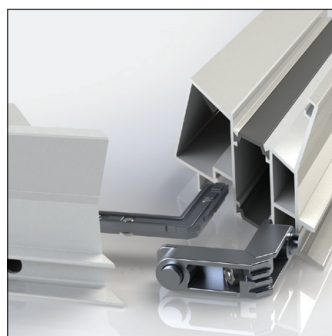
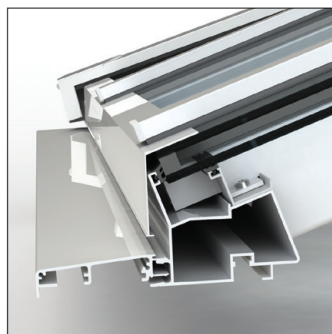


Technical Specification

Lantern Rooflight System



Designed for both residential and light commercial applications, our thermally efficient Lantern Rooflight System incorporates a wealth of design options. It is particularly ideal for use in residential properties where it is perfect to complement the outdoor living effect with our folding, sliding door system.

Maximising natural light, this fabricator friendly system has been designed to create a contemporary appearance with low line ridges and round edge glazing bars.

Design Features

- Mechanical jointing
- Corner joints
- Render stop
- Pre-machined glazing and hip bars
- Cills that echo our residential range
- Fixed 20 degree pitch to eliminate compound mitre cuts
- Thermally broken eaves ridges and bars

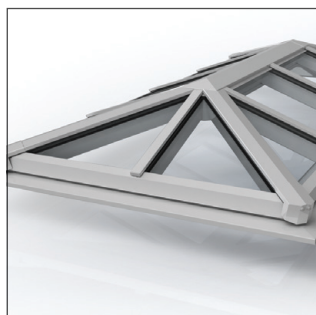
Design Benefits

- Secure
- Slim profile
- Ease of transportation
- On-site assembly
- Made to measure
- Thermally efficient



TECHNICAL SPECIFICATION

Application	Residential new build, refurbishment and light commercial.
Maximum width (between upstands)	3700mm
Maximum length (between upstands)	5800mm
Frame profiles	40mm slimline glazing bars.
Glazing options	24 - 32mm double glazed units.
Pitch (fixed)	20°
Cills	Design coordinated to rest of residential range.
Jointing	Mechanical
Thermal performance	Polyamide thermally broken profiles.
U-Value	1.66 W/m²K.
Finishes	Mill finish. Etched and anodised Silver AA25 or colours on request. Polyester powder coat paint. See separate list for standard colour range available.
Single or dual colour profiles	Option.
Design standards	BS EN 12020-2:2001 <i>Aluminium and aluminium alloys, extruded precision profiles.</i> BS 3987:1991 <i>Specification for anodic oxide coatings.</i> BS EN 12206-1:2021 <i>Paints and varnishes, coating of aluminium and aluminium alloys.</i>



Kestrel Aluminium Systems Ltd., 180 Rupert Street, Aston, Birmingham, B7 5DT

Tel: **0121 333 3575** • Fax: **0121 333 5335** • Email: **info@kestrelaluminium.co.uk** • **www.kestrelaluminium.co.uk**



We operate a continuous development programme and we reserve the right to amend specification without prior notification. Please contact the technical department for further information.
All copyright, trademarks and registered design rights for the products detailed in this brochure are the property of Kestrel Aluminium Systems Ltd.

